

Mate¹¹ album

pro 1 křavír, 4 ruce a pódio

Leona Sekulová

Wrote again

for 4 weeks 4 piece together

Villa

Lamee



Andante 114 60 ♩

- 1 -

secondo

Andante 1/15

-1-

18.

orino

Handwritten musical notation for the first system, featuring two staves with treble clefs and a key signature of one sharp (F#). The first two measures contain whole rests. The third measure begins with a melodic line: *1. Ví la tamoi lehovice*. The notation includes a slur over the notes and a fermata over the final note.

Handwritten musical notation for the second system, continuing the melody from the first system. It consists of two staves with treble clefs and a key signature of one sharp. The lyrics are: *ma' suk-ničku zplát kó zatan či i Leon-ce pěkně hebece k svat-kv.* The notation includes slurs and a fermata over the final note.

Handwritten musical notation for the third system, featuring two staves with treble clefs and a key signature of one sharp. The notation includes slurs and a fermata over the final note. There are some handwritten markings like '3' and '4' on the left side of the staves.

Handwritten musical notation for the first system, measures 1-5. The music is in G major (one sharp) and 4/4 time. The first three measures feature a simple bass line in the left hand and chords in the right hand. The fourth measure is marked "rit." and features a change in the right hand to a more complex, rhythmic pattern. The fifth measure is marked "a tempo" and continues the complex right-hand pattern. The bass line remains simple throughout.

Handwritten musical notation for the second system, measures 6-8. The music continues in G major and 4/4 time. The right hand features a consistent, rhythmic pattern of eighth and sixteenth notes. The left hand continues with a simple bass line.

Handwritten musical notation for the third system, measures 9-11. The music continues in G major and 4/4 time. The right hand features a consistent, rhythmic pattern of eighth and sixteenth notes. The left hand continues with a simple bass line. The system concludes with a double bar line.

18. 2

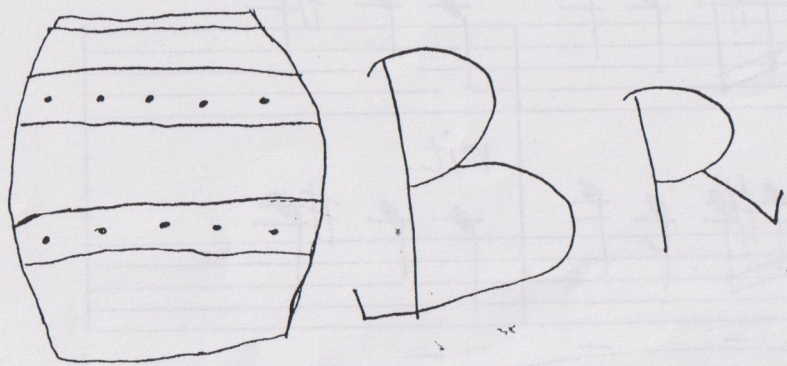
rit.

18.

1. Ví-řa tančí lehořee
2. skřítel se ptá, co Ti dáš, ma-řa! hez-ka! ví-řo!

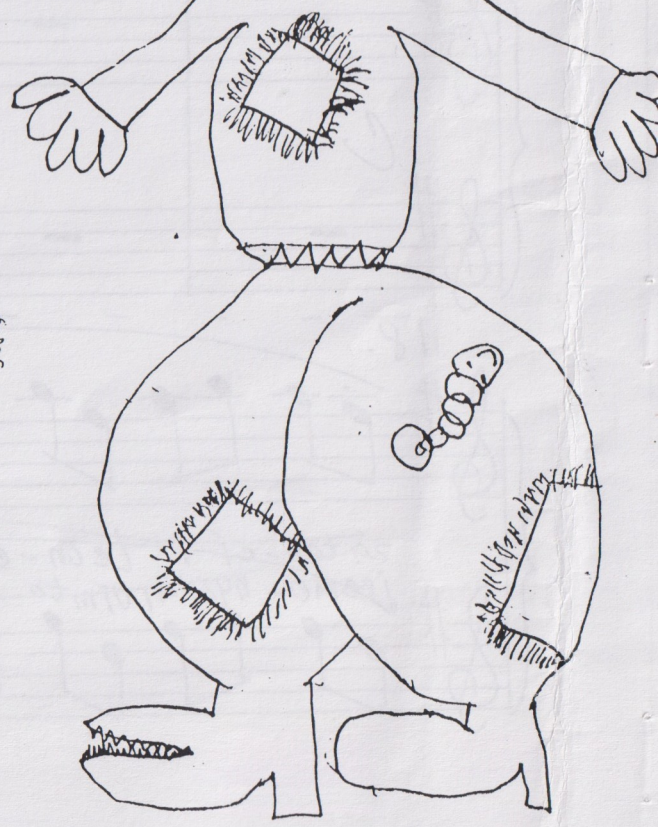
18.

za-tan-čí i Leon-ce
jsem o-hřzda, vřím to sám, pěkně hebece k svat-ku.
přej si, co ti mř-lo.



a

SKRITĚK



1715

Andante comodo

MM $\frac{3}{8}$ (C 50)

primo

secondo

f

Vivo, giocoso

♩ 120

primo

secondo

3

4

2

Andante comodo

141 ♩ 80

-4-

se
con
do

Handwritten musical score for the first system. It consists of two staves: a piano staff (top) and a bass staff (bottom). The piano staff contains several chords, some with stems pointing up and some with stems pointing down. The bass staff contains chords with stems pointing up. A dynamic marking *poco f* is written in the piano staff. A hairpin crescendo is drawn across both staves, labeled *accelerando*. At the end of the system, there is a dynamic marking *sfz* with a '1' below it.

Handwritten musical score for the second system. It consists of two staves: a piano staff (top) and a bass staff (bottom). Both staves contain chords with stems pointing up. A dynamic marking *mf in tempo* is written in the piano staff.

Handwritten musical score for the third system. It consists of two staves: a piano staff (top) and a bass staff (bottom). The piano staff contains chords with stems pointing up, and the bass staff contains chords with stems pointing up. A dynamic marking *rit.* is written in the piano staff. At the bottom of the page, there is a handwritten number '8' with a horizontal line through it.

Andante comodo

-4-

imo

poco f

accelerando

mf in tempo

-9-

Allegretto $\text{♩} = 120$

-5-

Handwritten musical notation for the first system. It consists of two staves joined by a brace on the left. The top staff has a treble clef and contains a series of eighth-note chords, each with a stem that rises and then falls. A circled 'f' dynamic marking is present in the first measure. The bottom staff has a bass clef and contains a series of eighth-note chords, each with a stem that rises and then falls.

Handwritten musical notation for the second system, continuing the pattern of eighth-note chords in both staves from the first system.

Handwritten musical notation for the third system. It begins with the same eighth-note chord pattern. The top staff has a treble clef and the bottom staff has a bass clef. The system ends with a double bar line. There are some handwritten annotations below the staves, including the word 'Vist' and some symbols.

fp. -----

-10-

Allegretto

- 5 -

Handwritten musical notation for the first system, measures 1-8. The music is in 3/4 time, marked *f*. The right hand features a melodic line with eighth-note patterns and some beamed sixteenth notes. The left hand provides a rhythmic accompaniment with eighth-note chords and single notes.

Handwritten musical notation for the second system, measures 9-16. The right hand continues with melodic patterns, including some descending runs. The left hand maintains the accompaniment with eighth-note chords and single notes.

Handwritten musical notation for the third system, measures 17-20. The right hand has a melodic line that ends with a fermata. The left hand has a similar melodic line. The system concludes with a double bar line. Above the final measure, there are two chords marked *p*.

TANEC

V

DEST



giocoso ♩ 120

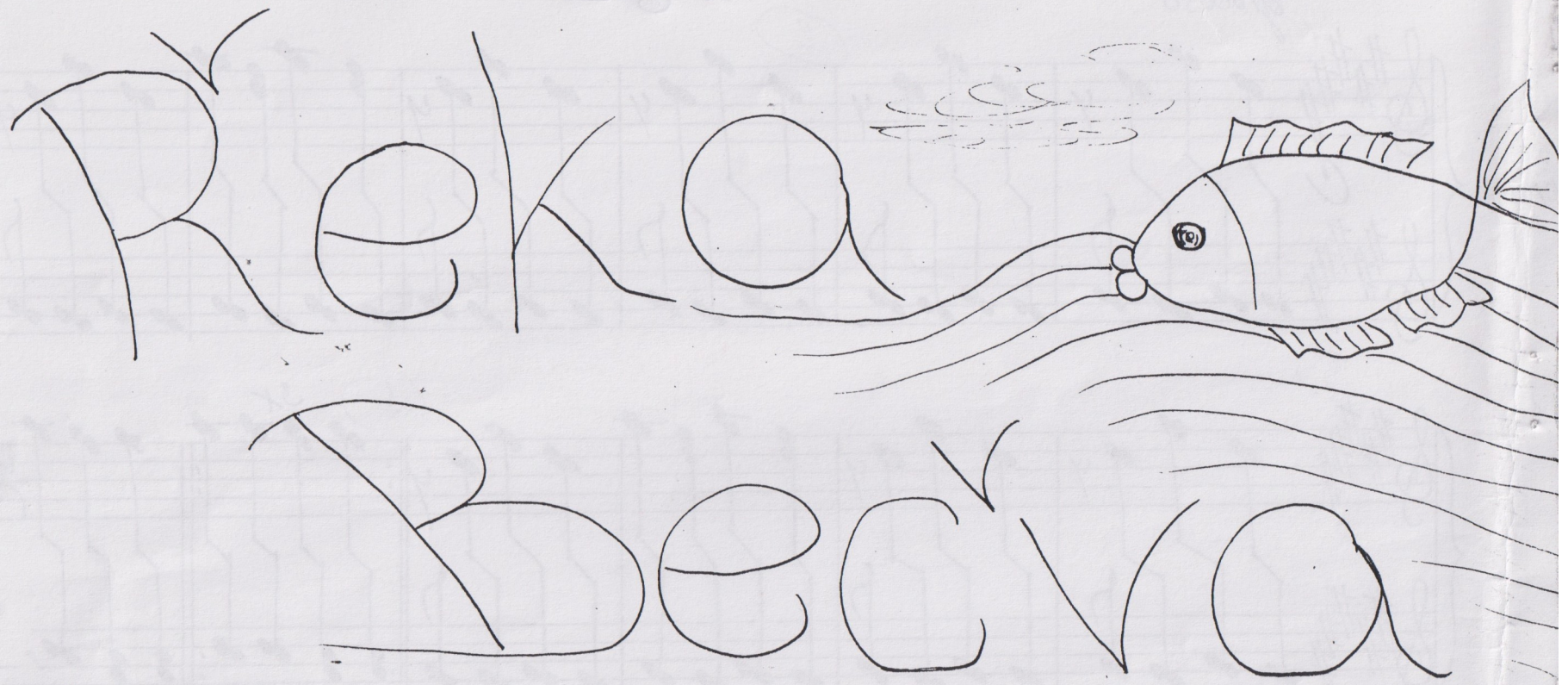
2-6-

secondo

giocoso

- 6 -

primo

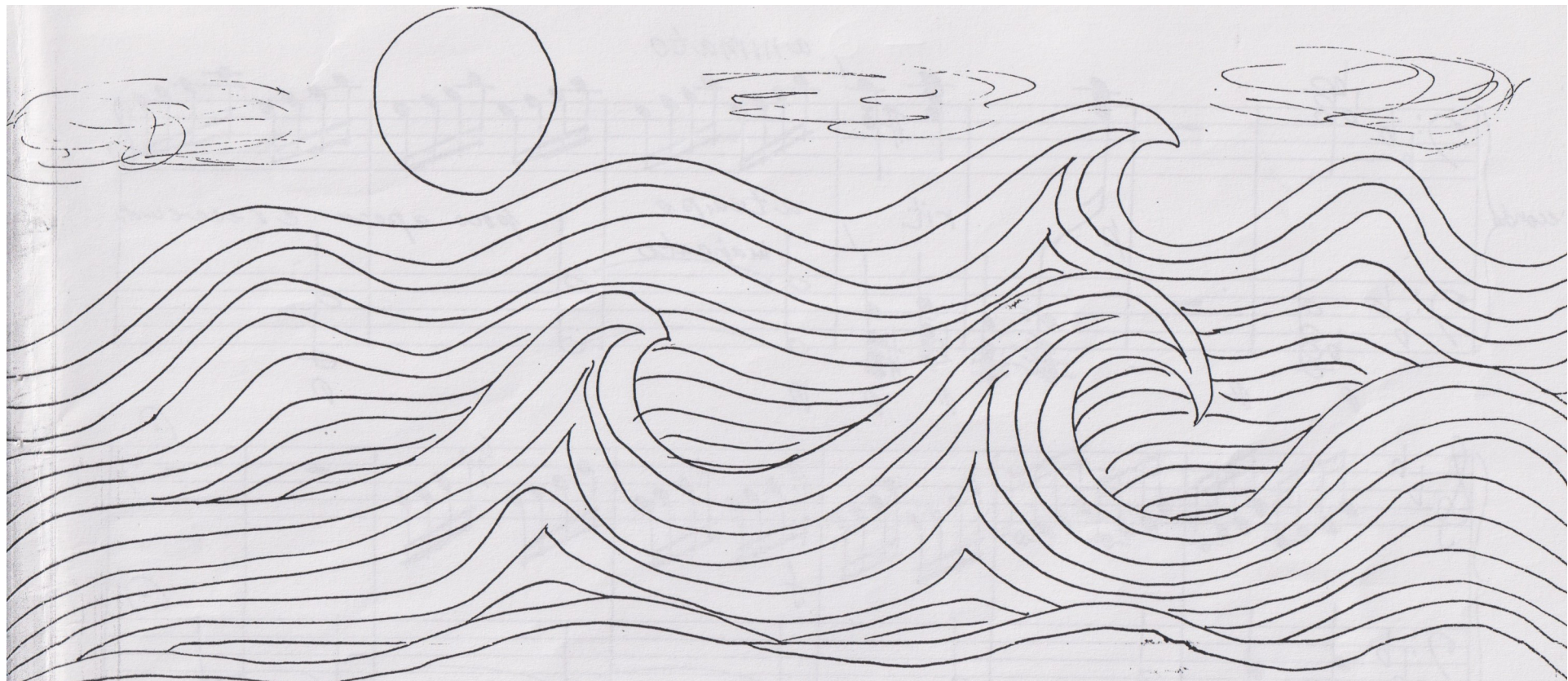


Andante

Andante

2/4 p

A handwritten musical score for piano. The score is written on two staves. The top staff is the treble clef and the bottom staff is the bass clef. The key signature is one flat (B-flat) and the time signature is 2/4. The tempo is marked "Andante". The music consists of a melody in the treble clef and a bass line in the bass clef. The melody is composed of eighth and quarter notes, with some slurs. The bass line consists of quarter notes and eighth notes. There are dynamic markings "p" (piano) throughout. The score ends with a double bar line and a fermata over the final chord.



Andante

primo

mf

$\frac{2}{4}$

Teče voda teče přes kameny, trávu
teče voda teče My se stálo. Pád...

no

mf *f* *mf rit.* *a tempo* *p*

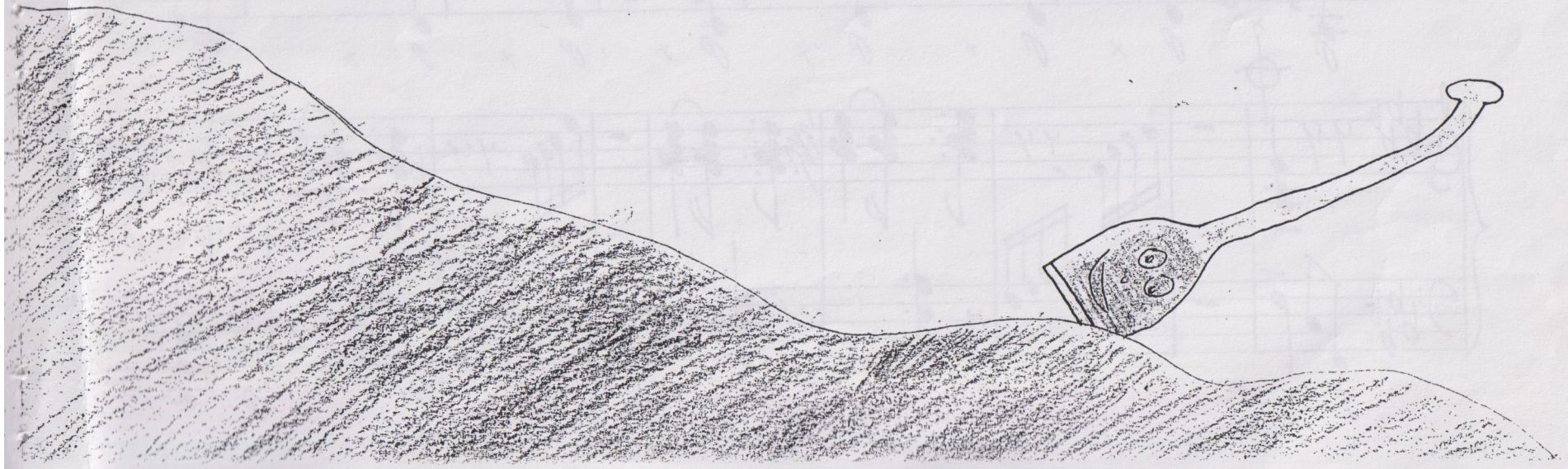
prestanimo *padra* *dolce* *rit.*

animato

mf *f* *dim.* *rit.*

Tempo I. *mf* *f* *dim.* *rit.*

Plavba loďi
po Bečvě



Allegro

seconda

secondo

Handwritten musical notation for the first system, featuring a treble and bass clef with various notes and rests.

Handwritten musical notation for the second system, including dynamic markings like "rit.", "Largo", and "p", and performance instructions like "Ped".

Handwritten musical notation for the third system, starting with "Coda Tempo I." and "pp", followed by a series of notes and rests.

Ped
 Da Capo al fine e poi CODA

- 24 -
 p x p x p

Primo

Handwritten musical notation for the first system, consisting of two staves (treble and bass clef) with rests in all measures.

Largo

~~C~~ *mf p*

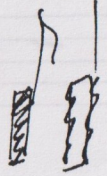
Handwritten musical notation for the second system. The upper staff contains several vertical hatching marks and some notes. The lower staff contains rests and some hatching marks. The tempo marking 'Largo' and dynamic marking '~~C~~ mf p' are present.

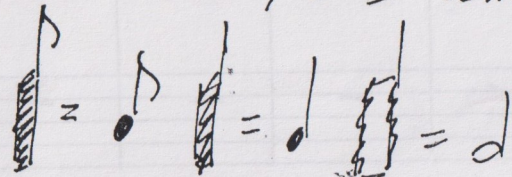
CODA *Tempo*


Da capo al fine poi CODA

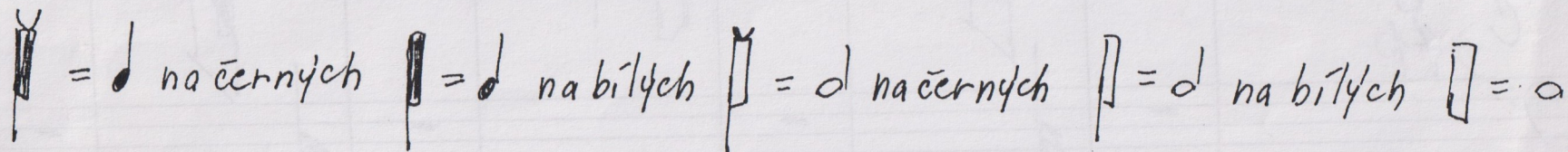
Handwritten musical notation for the third system. The key signature changes to three flats (B-flat, E-flat, A-flat). The upper staff has a melodic line with accents and slurs. The lower staff has a rhythmic accompaniment. The tempo marking 'CODA Tempo' and the instruction 'Da capo al fine poi CODA' are present.

Vysvětlivky:

primo: znaky  označují hru pádlem do strun



secondo: znaky  označují hru celou plochou dlaně do kláves



označení výšky tónu je přibližné, nemusí se přesně dodržovat, naznačuje sled shora dolů a pod.